

WINSTROL

Generic Name: anabolic steroids

Brand Name: Winstrol

Last reviewed on RxList: 12/8/2004

Rx PROFESSIONAL

SIDE EFFECTS

Overview

Professional Information

Related Resources

[home](#) > [drugs a-z list](#) > Winstrol(Anabolic steroids) side effects drug center

Winstrol Side Effects Center



[Cancer 10...](#)

[Breast Ca...](#)

[Skin Canc...](#)

Medical Editor: [John P. Cunha, DO, FACOEP](#)

Last reviewed on RxList 11/07/2016

Winstrol (anabolic steroids) is a synthetic steroid, similar to [testosterone](#), used in the treatment of [hereditary angioedema](#), which causes episodes of swelling of the face, extremities, genitals, bowel wall, and throat. Winstrol may decrease the frequency and severity of these attacks. The drug brand name Winstrol is no longer available in the U.S. Generic versions may still be available. Common side effects of Winstrol include:

- new or worsening acne,
- difficulty sleeping,
- headache,
- changes in sexual desire,
- nausea,
- vomiting,
- changes in skin color, or

Pill Identifier Tool >
Quick, Easy, Pill Identification

Drug Interaction Tool >
Check Potential Drug Interactions

Pharmacy Locator Tool >
Including 24 Hour, Pharmacies

[Cancer FAQs](#), [Gastric Cancer Quiz FAQs](#), [Head and Neck Cancer Quiz FAQs](#)

ADVERTISEMENT

Featured Slideshows



Sleep

What Are the Best Sleeping Positions?



Heart Disease

Heart Attack vs. Cardiac Arrest vs. Heart Failure

- ankle swelling.

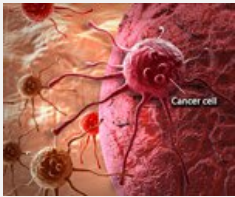
In adolescent and adult males, side effects of Winstrol may include frequent or persistent erections of the penis, and the appearance or aggravation of acne. In women, side effects of Winstrol may include [hoarseness](#), acne, changes in menstrual periods, or more facial hair.

The use of anabolic steroids such as Winstrol may be associated with serious adverse reactions, many of which are dose related. Patients should be placed on the lowest possible effective dose. Medications that may interact with Winstrol include anticoagulants (blood thinners), [insulin](#), or an oral diabetes medicine. Tell your doctor all medications you are taking. Winstrol is known to cause birth defects in a fetus. Do not take this medication if you are pregnant or could become pregnant during treatment. It is not known whether Winstrol is excreted in human milk. Many drugs are excreted in human milk and there is the potential for adverse reactions in nursing infants from anabolic steroids. Consult your doctor before breastfeeding.

Our Winstrol (anabolic steroids) Side Effects Drug Center provides a comprehensive view of available drug information on the potential side effects when taking this medication.

This is not a complete list of side effects and others may occur. Call your doctor for medical advice about side effects. You may report side effects to FDA at 1-800-FDA-1088.

Winstrol Professional Information



[Cancer 10...](#)

[Breast Ca...](#)

[Skin Canc...](#)

SIDE EFFECTS

Hepatic: Cholestatic [jaundice](#) with, rarely, hepatic [necrosis](#) and death. Hepatocellular neoplasms and peliosis hepatis have been reported in association with long-term androgenic-anabolic [steroid therapy](#) (see **WARNINGS**). Reversible changes in [liver](#) function tests also occur including increased bromsulphalein (BSP) retention and increases in [serum bilirubin](#), glutamic oxaloacetic transaminase ([SGOT](#)), and [alkaline phosphatase](#).

Genitourinary System: *In men. Prepubertal:* Phallic enlargement and increased frequency of erections.

Postpubertal: Inhibition of testicular function, testicular [atrophy](#) and [oligospermia](#), [impotence](#), [chronic priapism](#), [epididymitis](#) and [bladder](#) irritability.

In women: [Clitoral](#) enlargement, [menstrual](#) irregularities.

In both sexes: Increased or decreased [libido](#).

CNS: Habituation, excitation, [insomnia](#), [depression](#).

Gastrointestinal: [Nausea](#), vomiting, [diarrhea](#).

Hematologic: Bleeding in patients on concomitant [anticoagulant](#) therapy.

Breast: [Gynecomastia](#).

Larynx: Deepening of the voice in women.

Hair: [Hirsutism](#) and male pattern [baldness](#) in women.



Psoriasis

What Does a Psoriasis Rash Look Like?

Skin: [Acne](#) (especially in women and prepubertal boys).

Skeletal: Premature closure of epiphyses in children (see [PRECAUTIONS, Pediatric Use](#)).

Fluid and Electrolytes: [Edema](#), retention of serum electrolytes ([sodium](#), [chloride](#), [potassium](#), [phosphate](#), [calcium](#)).

Metabolic/Endocrine: Decreased [glucose](#) tolerance (see [PRECAUTIONS](#)), increased serum levels of low-density [lipoproteins](#) and decreased levels of high-density lipoproteins (see [PRECAUTIONS, Laboratory Tests](#)), increased [creatinine](#) and [creatinine](#) excretion, increased serum levels of creatinine phosphokinase (CPK).

Some virilizing changes in women are irreversible even after prompt discontinuance of therapy and are not prevented by concomitant use of [estrogens](#) (see [PRECAUTIONS](#)).

DRUG ABUSE AND DEPENDENCE

Controlled [Substance](#) Class: WINSTROL (anabolic steroids) is classified as a controlled substance under the Anabolic Steroids Control Act of 1990 and has been assigned to Schedule III.

Read the entire FDA prescribing information for [Winstrol \(Anabolic steroids\)](#)

Read More
»

Related Resources for Winstrol



- [Cancer 10...](#)
- [Breast Ca...](#)
- [Skin Canc...](#)

© Winstrol Patient Information is supplied by Cerner Multum, Inc. and Winstrol Consumer information is supplied by First Databank, Inc., used under license and subject to their respective copyrights.

From 

Cancer Resources

- [Is This the Most Effective Cancer Treatment?](#)
- [How your genes affect your cancer risk](#)
- [How a Rare Cancer Affects Your Blood](#)

Featured Centers

- [How Could You Live Better With Migraine?](#)
- [Not Being Defined by Your Cancer](#)
- [Track Cold & Flu in Your Area](#)

Health Solutions From Our Sponsors

- [Frequent Constipation?](#)
- [Greater Food Accessibility](#)

Health Solutions From Our Sponsors

Cancer Survivorship	21st Century Cures	Immediate Pain Relief	Penis Curved When Erect
Independent Seniors	Time to Quit Smoking	Caregiving Solutions	Gut Inflammation?
Live Better With Diabetes	Life-Changing Vitamins	Ringing in the Ears	Smartphone Health Apps
Transitional Care	Have Trouble Sleeping?	Therapy at Home?	

[RxList Home](#)

[Drugs & Medications](#)

[Slideshows](#)

[Pill Identification Tool](#)

[Vitamins, Herbs, & Dietary Supplements](#)

[Images](#)

[Diseases](#) [Symptom Checker](#) [Dictionary](#) [Quizzes](#)

[About RxList](#)

[Consumer Contact RxList](#)

[Terms of Use](#)

[Privacy Policy](#) [Sponsor Policy](#)

[Pharmaceutical Companies A-Z](#)

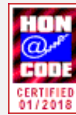
[Site Map](#)

[Medscape Reference](#)

[WebMD](#) | [Medscape](#) |

[eMedicineHealth](#) | [MedicineNet](#) | [OnHealth](#) | [WebMDRx](#) | [BootsWebMD](#) |

[Medscape France](#) | [Medscape Germany](#)



Ad Choices

